



# HOSHIZAKI

## CERTIFICATION



HACCP International



ISO9001

## DCM-80LS-P-HC

### ICE & WATER DISPENSER



## Key Features



**Eco-friendly Refrigerant**



### Perfect fit

There are no exhaust outlet on the left and right sides and the back, so it can be placed close to the wall.



### Easy for maintenance

Notify when parts should be replaced



### Enhanced daily cleaning routine

Draining board can be removed



No need to hold the bucket with your hands when removing ice

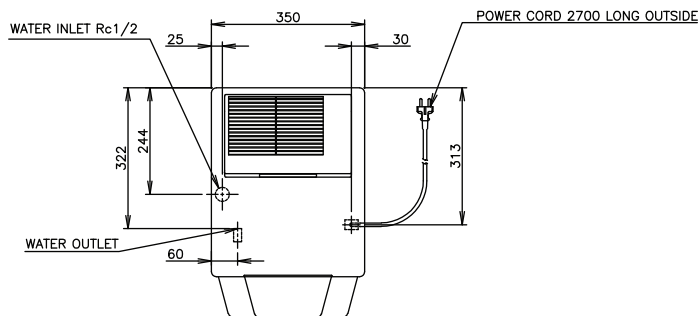
Hoshizaki DCM series are ice/water dispensers producing high-quality servings of cubelet ice and/or water. The three steps of quality ice production, protected ice storage, as well as quick service of ice are all combined in one device – with the help of only one button your refreshment is ready in seconds. With DCM DISPENSERS the user can select from these options:

- Cubelet ice only
- Cubelet ice and water
- Water only



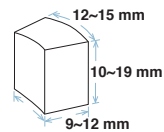
## Dimensions & Specifications

### TOP

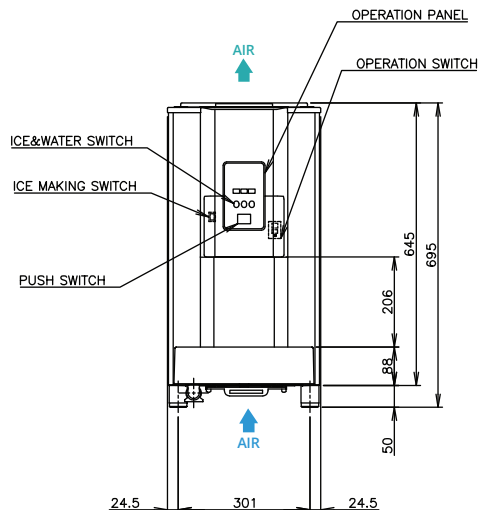


### ICE SHAPE

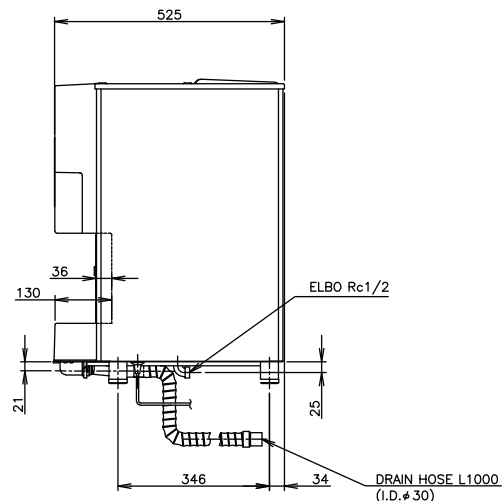
**Cubelet**  
Compressed Flake Ice



### FRONT



### RIGHT SIDE



MODEL		DCM-80LS-P-HC
ICE SHAPE		Cubelet (Compressed Flake Ice)
POWER SUPPLY		1 Phase 220-240V 50Hz Capacity: 0.48kVA (2.1A)
AMPERAGE		1.7A Starting: 8.3A
ELECTRIC CONSUMPTION		290W
HEAT REJECTION		(AT32°C / WT21°C) 620W
ICE PRODUCTION PER 24H	(AT10°C / WT10°C)	Approx. 80kg
	(AT21°C / WT15°C)	Approx. 65kg
	(AT32°C / WT21°C)	Approx. 50kg
ICE DISPENSING RATE (40G / CUP)	(AT10°C / WT10°C)	Approx. 130 cups/h
	(AT21°C / WT15°C)	Approx. 115 cups/h
	(AT32°C / WT21°C)	Approx. 99 cups/h
STORAGE CAPACITY		Approx. 1.9kg
WATER CONSUMPTION PER 24H	(AT32°C / WT21°C)	50 L
REFRIGERANT		R290
OUTSIDE DIMENSIONS		Carton: 350mm (W) x 525mm (D) x 695(~710)mm (H)
PACKAGE		Carton: 400mm (W) x 581mm (D) x 749mm (H)
WEIGHT		41kg (Gross: 44kg)
OPERATING CONDITIONS		Ambient Temp.: 5-40°C, Water Supply Temp.: 5-35°C,
		Water Supply Pressure: 0.05-0.78MPa
		Voltage Range: Rated Voltage ±6%



# HOSHIZAKI

## HOSHIZAKI (THAILAND) LIMITED

No. 99 CP Tower North Park building 9th Floor, Zone D1, Soi Ngamwongwan 47  
Intersection 42, Thung Song Hong, Subdistrict, Lak Si District, Bangkok 10210  
TEL +66 2 005 9980 FAX +66 2 516 2646 <https://hoshizaki.co.th/en/>

